



Portfolio
Company



VETERAN
OWNED BUSINESS

- DESIGN - ENGINEERING - INNOVATION -

EMPE

M A M M E N & P E E R Y C O R P

presents

PROMETHEUS

AI Integrated IoT Network Security and
Surveillance System



What is the most crucial
element when it comes to
saving a life?

Time.

Analysis of Video Taken at SOFIC 2022, Tampa, FL USA by Prometheus

All identifications were made in less than 35 milliseconds when this video was analyzed. We are now at **less than 1 millisecond** with **live streaming at 720px and 36fps.**



VIDEO DEMO



What We Do

AI Integrated Security and Response Based on Your Needs

AGNOSTIC ACTION-BASED VISION

Identify anything. Visual identification based on object recognition, action association, and human behavior.

AGNOSTIC IoT AND SENSOR INTEGRATION

Control any device, integrate any sensor

LOCATION DETECTION AND TRACKING

Continuous tracking using computer vision, RF detection, and GIS Mapping

SUBSCRIPTION-BASED

Both hardware and software as a subscription. Multiple tiers. We provide and maintain both.

MADE IN THE USA

NDAA compliant. Designed, developed, assembled, and packaged in the USA.



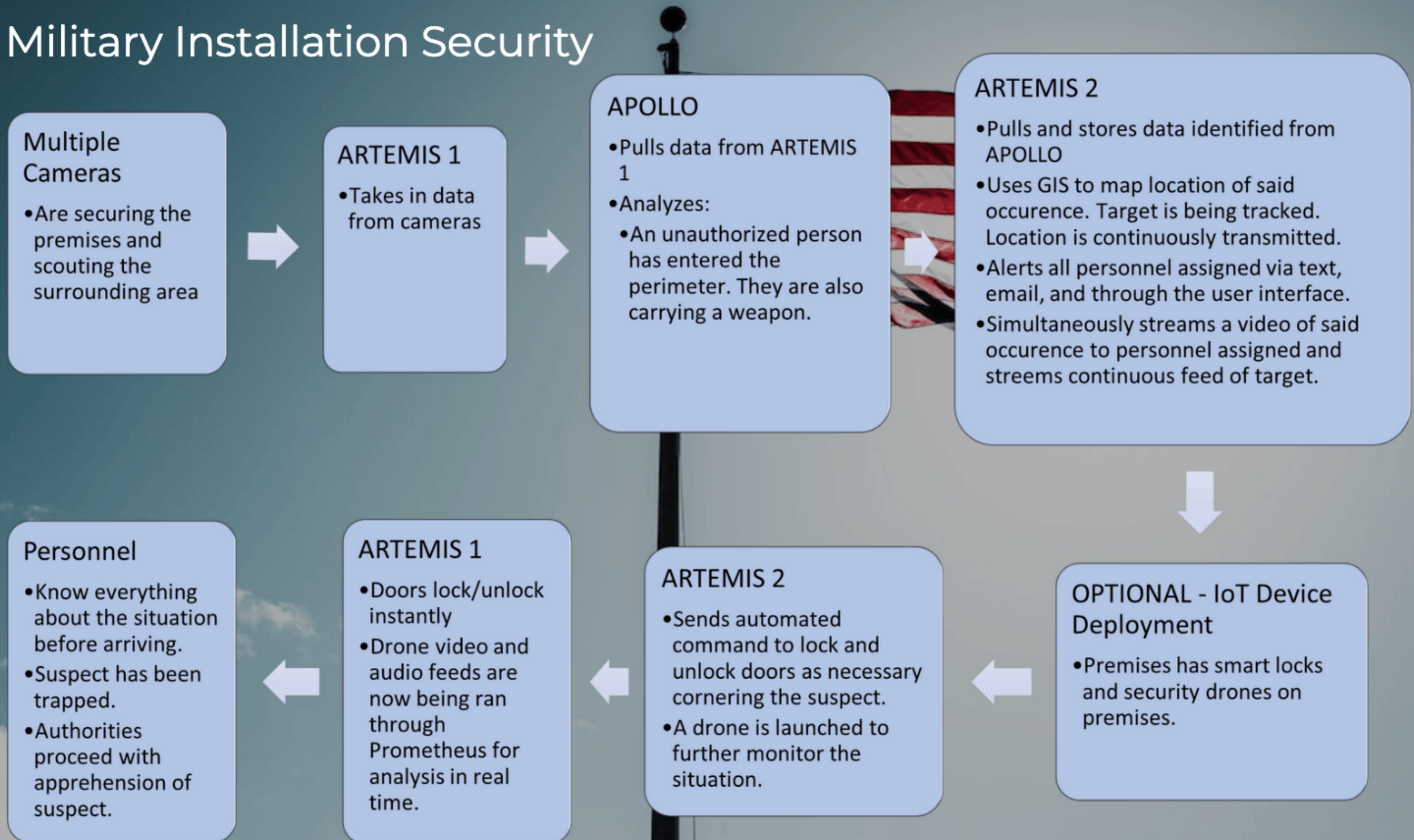
Example Scenario

Military Installation Security

APOLLO
AI SERVER

ARTEMIS 1
COMMAND SERVER

ARTEMIS 2
STORAGE SERVER



Example Scenario

Hostile Crossing the Border

APOLLO
AI SERVER

ARTEMIS 1
COMMAND SERVER

ARTEMIS 2
STORAGE SERVER

Multiple Cameras

- Are recording the Texas border

ARTEMIS 1

- Takes in data from cameras
- Takes in data from RF antenna array

APOLLO

- Pulls data from ARTEMIS 1
- Analyzes:
 - A man is sneaking across the border. He has a cellphone in his pocket. His location is being triangulated via said signal. He is carrying a rifle on his back.

ARTEMIS 2

- Pulls and stores data identified from APOLLO
- Uses GIS to map location of said occurrence
- Alerts user of occurrence via email, sms, or through the user interface.

APOLLO

- Pulls data from ARTEMIS 1
- Analyzes the streams from cameras and drones simultaneously. Continues to triangulate signal from RF antenna arrays.

ARTEMIS 1

- Deploys Drone
- Takes control of video stream

ARTEMIS 2

- Sends automated command or receives command from user and sends command

OPTIONAL - IoT Device Deployment

- User wants to deploy a drone to said occurrence
- Command can be automatic or sent via email, sms, or through the user interface

Example Scenario

Commercial Use - Marketing and Analytics

APOLLO
AI SERVER

ARTEMIS 1
COMMAND SERVER

ARTEMIS 2
STORAGE SERVER

Multiple Cameras

- Are recording inside of a retail establishment

ARTEMIS 1

- Takes in data from cameras

APOLLO

- Pulls data from ARTEMIS 1
- Analyzes:
 - Store setup
 - Store inventory
 - People shopping
- Identifies:
 - People's physical and social attributes
 - How people flow through the store
 - What people are paying attention to
 - What people are taking to try on
 - What people are purchasing

ARTEMIS 2

- Pulls and stores data identified from APOLLO
- Uses GIS to map location of all identifications
- Sends out an hourly report summarizing findings
- Compiles analyzed data for further analysis and use by company

Backend Analytics

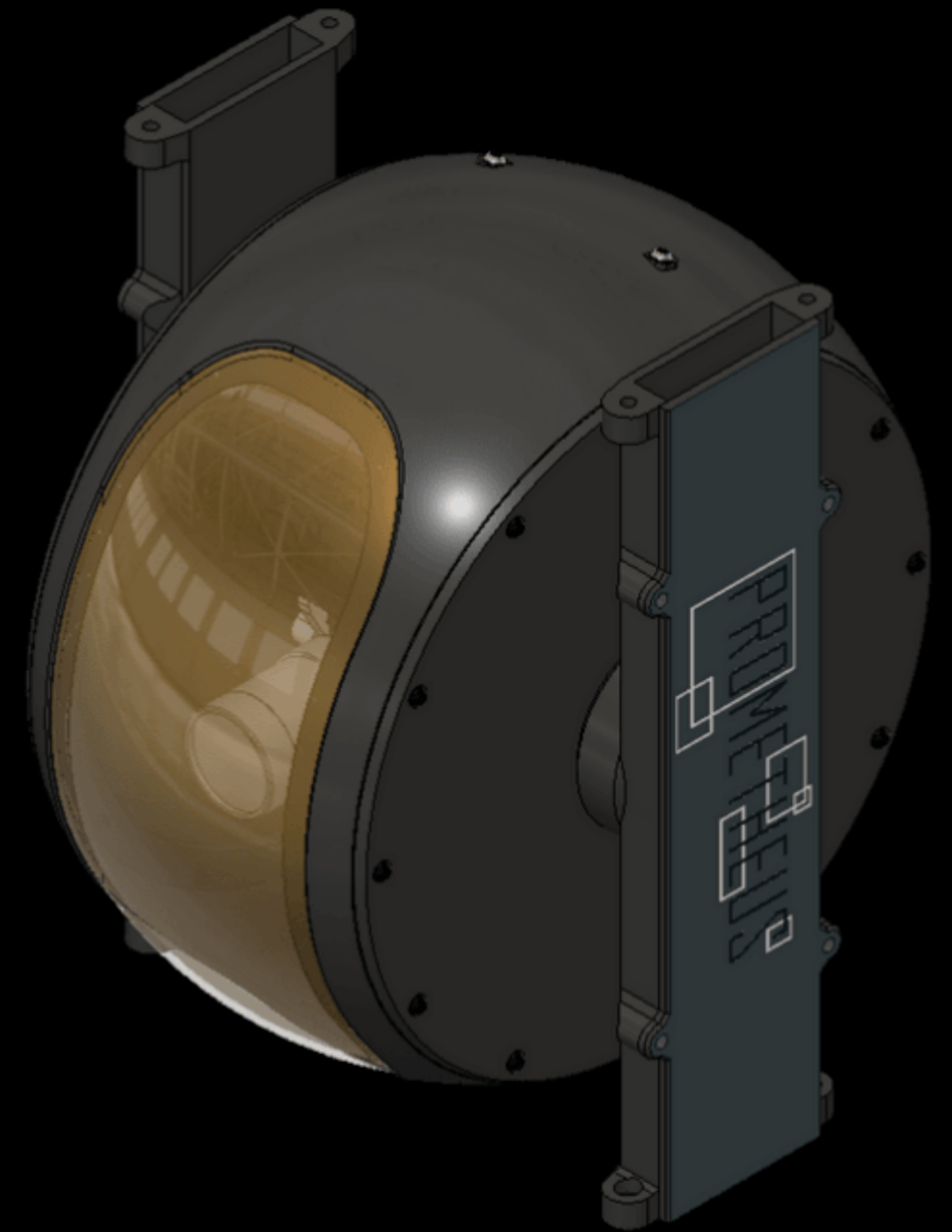
A Secondary Revenue Stream for Commercial Markets

Throughout the use of Prometheus each Artemis 2 server will be analyzing and collecting data.

This data will be very valuable to other businesses and organizations.

Contracts will be in place with regards to data ownership by Mammen & Peery Corp. This is with exclusion of classified data.

Copies of specific data will then be sold to businesses and organizations for their own use.





Revenue Models

Two Streams of Revenue

Subscription Model Prometheus

Non-subscription pricing available for certain military applications

- HaaS: Hardware as a service. All equipment is given on a subscription basis.
- SaaS: Software as a service. Software will be a subscription tiered based on customer needs. Non-defense clients will be cloud-based.
- Maintenance included
- Localized server maintenance and management
- Agreements to be in place for ownership of data depending on client

Transactional Model Commercial Backend Data

- Customers purchase specific backend data analytics for use in their own businesses



Competition

What Makes Us Better

Unique and Advanced Computer Vision

- Based on action and human behavior analysis without the need for facial recognition databases. API can be written for integration with databases for appropriate parties.
- Can be used to identify anything, not just weapons.
- Identification in less than 1ms.
- Ability to live stream identification smoothly at 720px and 36fps

Advanced IoT Device Integration and Control

- Sensor and IoT device agnostic. Ability to control devices such as drones from other vendors and run systems through our server for analysis.

Secure Communications

- All communications are on a closed system for the military model.
- All data can only be accessed from the main server.
- Any interception of feeds will only yield a standard camera feed and none of the analysis.

All-in-One User-Friendly Interface

- Our user interface puts all data and control of our system into an easy to use format with customizable reports and intuitive, searchable database capabilities.

Made in the USA

- 40% of companies in the AI CCTV market are Chinese owned. This doesn't include domestic companies that manufacture or package in China.
- Many companies claim to make their products in the USA, but then package overseas. Our products are designed, developed, assembled, and packaged in the USA and all manufactured components that come from outside of the US are through companies already approved by the DoD.

Fully Subscription Based

- All hardware and software are purchased via subscription. All general maintenance and upgrades included in subscription.

Extensive Dual Use Capabilities

- Coming in Phase 3: the commercial version will be used for marketing and analysis inside retail establishments with backend data being available for purchase by other companies thus introducing a secondary revenue stream as well.



Market Size

TAM

SAM

SOM

AI CCTV Market

\$55.22 Billion

by 2023

North American
Market Segment

\$16.6 Billion

30% of the TAM

North American
Market Segment

\$1.66 Billion

10% of the SAM



AFWERX



Entry to Market

AFWERX IDIQ Subcontract

Indefinite Delivery Indefinite Quantity

Fellow Capital Factory portfolio company CareStarter has recently been awarded an IDIQ contract with AFWERX for digital ethnography and is requesting us to come on as a subcontract.

Customer Acquisition

We are currently demonstrating Prometheus to customers within the AFMSIC department of the Air Force for use in security and infrastructure across Air Force installations.

Entry to Market

The Texas Border

Market Opportunity

The US government has **allotted \$26B towards the border initiative** with an additional **\$17M being allotted solely to securing the Texas Border**

Current State of the Border

There are currently **5400 trail cameras** surveilling the Texas border **with a handful of people watching them live on monitors**. Then terabytes of data is sorted through to establish connections between noted events and people.



Entry to Market

PHASES 1 & 2

- **Acquire contracts with DoD entities and border securities**
- Demonstrations currently in progress in the DoD space with:
 - AFWERX
 - NavalX
- Demonstrations currently in progress on the Texas border with:
 - Texas Military
 - DPS
 - National Guard
 - Border Patrol

PHASE 3

- **Acquire contracts in the commercial, local government, and education sectors**
 - Commercial revenue focus:
 - Marketing and analytics for companies plus backend data to be sold for use to other companies
 - Focus on safety in schools



Team



Mike McDonald - CEO

Former President - Gnostic Systems,
Former Director of Manufacturing
Solutions Central Region - Northrop
Grumman, Former Staff Engineer - IBM.
Had one of the first projects in knowledge-
based systems, now known as IoT.



Jake Peery - CFO

Co-Founder
MBA. Extensive experience in business
financial management, cost-analysis, risk-
analysis, projections, client relations,
ground-up business development and
growth, bootstrapping, human resources
and hiring, project management, team
management, resource allocation,
negotiations, and in-person sales.



Jake Mammen - CTO

Co-Founder
Certified Full Stack Robotician. Veteran.
Extensive experience in ground-up industrial
design, engineering, and fabrication, as well as
the development of custom hardware and
software. Advanced development skills in
Linux, Python, C++, and ROS.



Joey Gomez - Director of Sales

US Navy AOCS Graduate. Former Technical
Sales Regional Manager, Former Energy
Specialist - HILTI North America. Former
Design Engineer - Hughes Aircraft Electron
Dynamics Division. Active Texas State Guard
Team Leader NASAR Certified Search and
Rescue Teams.

Advisors



Michael T. Brown, Colonel US Army (Ret)

Former Director of Army Customer Requirements and Advocacy, Electronics Systems, BAE Systems. Focus areas included tactical Brigade Combat Teams (Heavy, Infantry, Stryker), Training and Doctrine Command Centers of Excellence, Warfighting Forums. Mike was lead subject matter expert for Army Component Commands to the worldwide military Combatant Commands (COCOM), particularly NORTHCOM, PACOM and CENTCOM.

Mike Brown retired in January 2003 as a Colonel after over 26 years of service and received military awards and decorations including the Distinguished Service Medal, Legion of Merit, Bronze Star Medal, as well as the Staff Identification Badges for the Joint Chiefs of Staff and the Army Staff.



Seed 1 Ask

\$500k for 12 months, \$700k for 18 months on a convertible note or direct equity investment.

\$200k needed to start. 6 months runway. Beta to market within 2 months.

This round of funding is to be used to:

- Finish v1 for beta testing (currently have a demo version)
- Patent Prometheus design, management system, software, and other IP.
- Secure DoD contracts and launch beta testing across the Texas border
- Work towards acquiring further contracts with DoD entities.
- Work towards acquiring other state contracts border contracts and a federal border contract.



What's Next?

The next round of funding will focus on:

- **Multiple versions of Prometheus**
 - Multiple mounts, uses, and packages
- **Federal border and defense contracts**
 - Leveraging the success on the IDIQ subcontract and use on the Texas border
- **Public transit contracts**
 - Airports, trains, and other public transport
- **Smart Cities**
 - Contracts with other cities like Ybor City that are looking towards the future of tech and human interaction

Thank You

For Your Time

Contact:

Jake Peery, Co-Founder

Phone: (281) 733-7980

Email: jakep@mammenandpeery.com

