



Rhyzo



A dramatic landscape featuring a forest fire in the background. The sky is filled with dark, billowing smoke and bright orange flames. In the foreground, several tall, thin evergreen trees stand on a hillside covered in dry brush and fallen branches. The overall mood is somber and urgent.

**Our world has needed a
guiding vision for a long time.**

“In a way, it’s the poets who have failed us, because they have not provided a song or sung a vision that we could all move in concert to.”

*Terence McKenna
Master Orator and Adventurer*

A vibrant, fantastical illustration of a garden. In the center, a clear glass jar with a white lid sits on a mossy rock. The garden is filled with various plants, including pink and yellow flowers, green ferns, and blue butterflies. The background is a dense wall of green foliage. The overall scene is bright and colorful, with a dreamlike atmosphere.

In Recent Years,
a Dream has Ignited



A Necessary Dream of a Better Future



Mushrooms are part of this New Dream

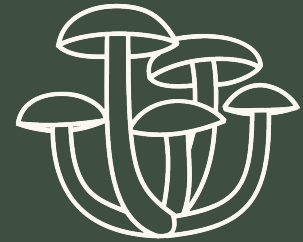
“The ever-increasing demand for functional foods from the health-conscious consumers has caused a rapid growth in demand for medicinal mushroom-based products.”

- expertmarketresearch.com

But, Growing Mushrooms Is Difficult

Currently,

Cultivators mist and fan their mushrooms **4 times per day** for optimal mushroom growth.



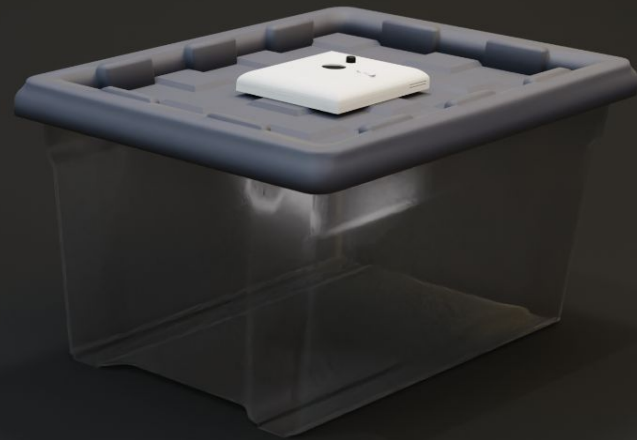
Per batch of mushrooms, a cultivator can expect to dedicate **5 hours** to manually controlling environmental conditions.



Rhyzo Automates Mushroom Cultivation



It's modular, so you can
attach the device to **Any** container





So that you can grow on your counter, or in your closet.

Rhyzo can grow almost any Mushroom



Lion's Mane
Functional

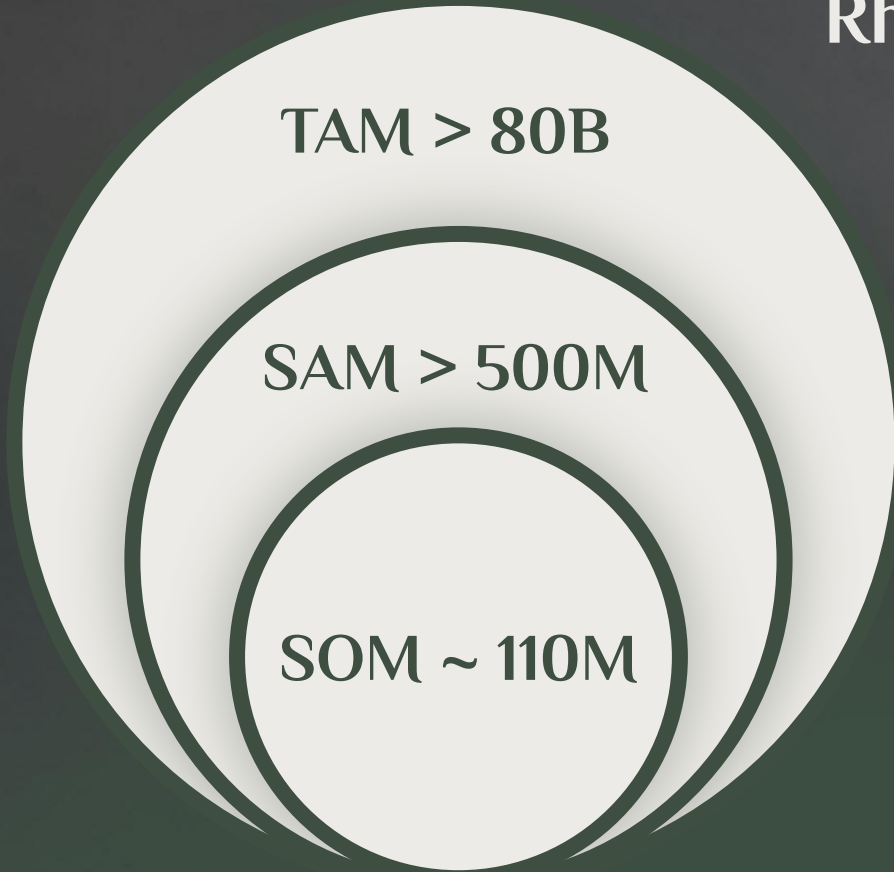


Blue Oyster
Culinary



Psilocybe
Medicinal

Rhyzo's Market is Growing



*TAM - Global Mushroom Market
(Culinary + Medicinal)*

*SAM - People potentially
interested in At-Home Mushroom
Cultivation*

*SOM - Actively purchasing
At-Home Mushroom Cultivators*

To us, Values are Central

Virtuous Profits



We are committed to doing our part
in collective compassion

Healing Community



We help people heal themselves and
each other using mushrooms.

Peace and Purpose



Everyone involved with Rhyzo
deserves a sense of self-actualization

We are Optimistic about our Forecast



Crowdfunding is Booming

within the mushroom-community



Mella
\$600K Campaign



TerraShroom
>1.5M Campaign



Shrooly
>1.5M Campaign

Rhyzo can be purchased for a balanced price that is more accessible to a wide range of mushroom cultivators. Our device meets the needs of cultivators with one tub, or one hundred tubs. Rhyzo can be sold as a luxury item, or as a utility item.



Rhyzo is one of the many puzzle pieces in a New Dream

In everything we do, we move in service of a higher manifestation of humanity. The story of a company is the story of its driving narratives crystalizing into reality. Rhyzo's central narratives are shared by a rising movement toward a better world. We resolve to dream far, and make the world better with each action. This is part of what differentiates Rhyzo and all of its features.

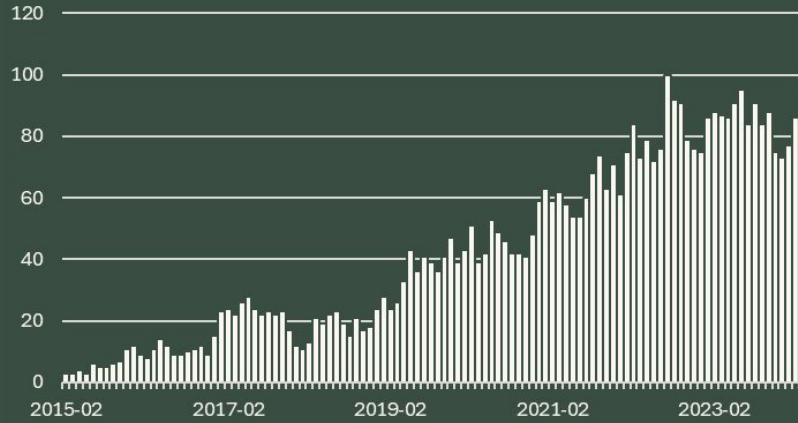


Rhyzo

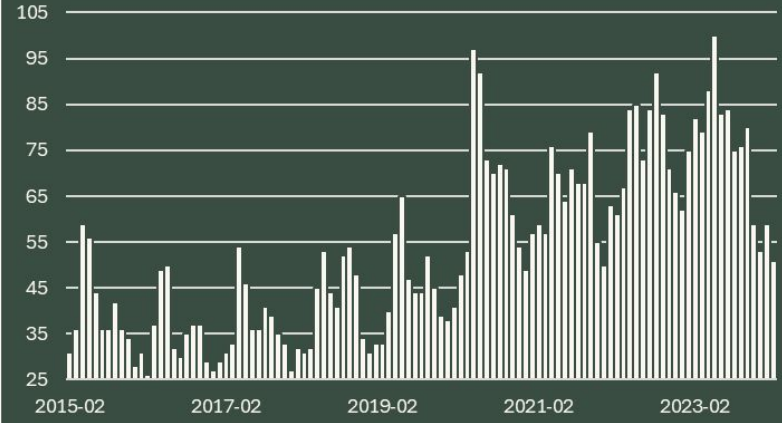


Appendix

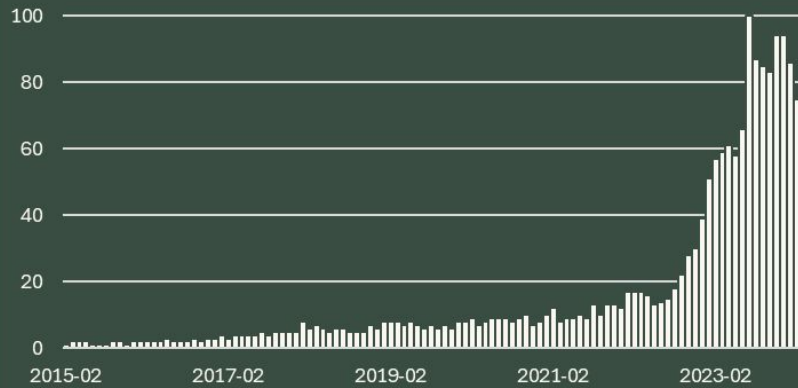
Interest in Microdosing is up 3,500%



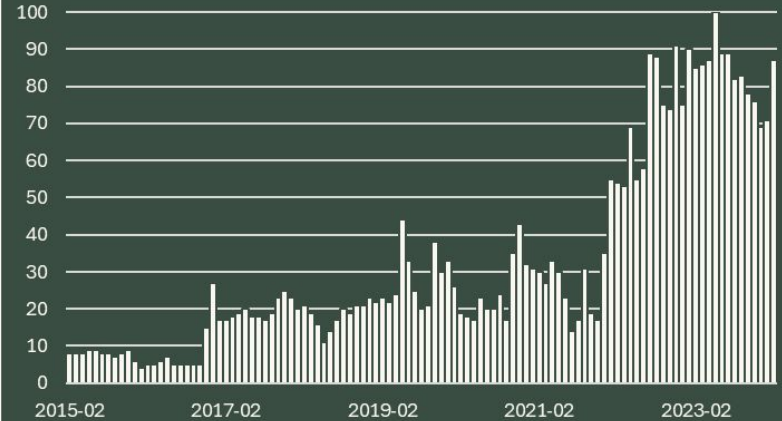
Interest in Mushroom Cultivation is up 300%



Interest in Mushroom Coffee is up 10,000%

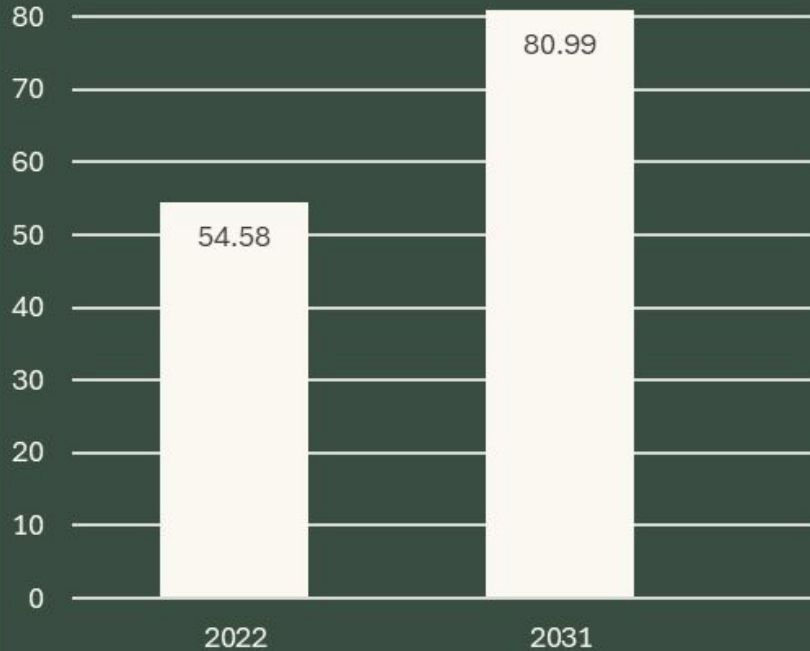


Interest in Psilocybin is up 1,000%

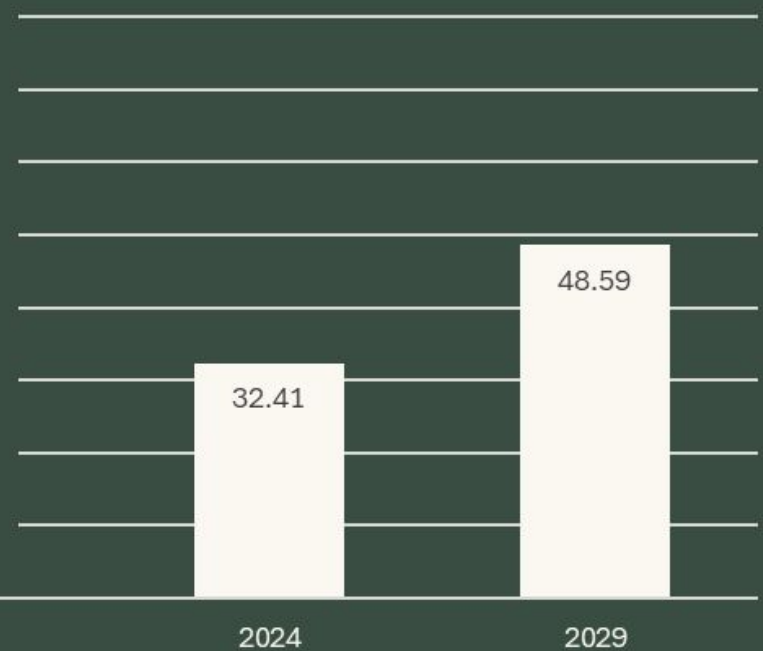


Market Estimates and Forecasts

Market Value (In Billions)
Culinary



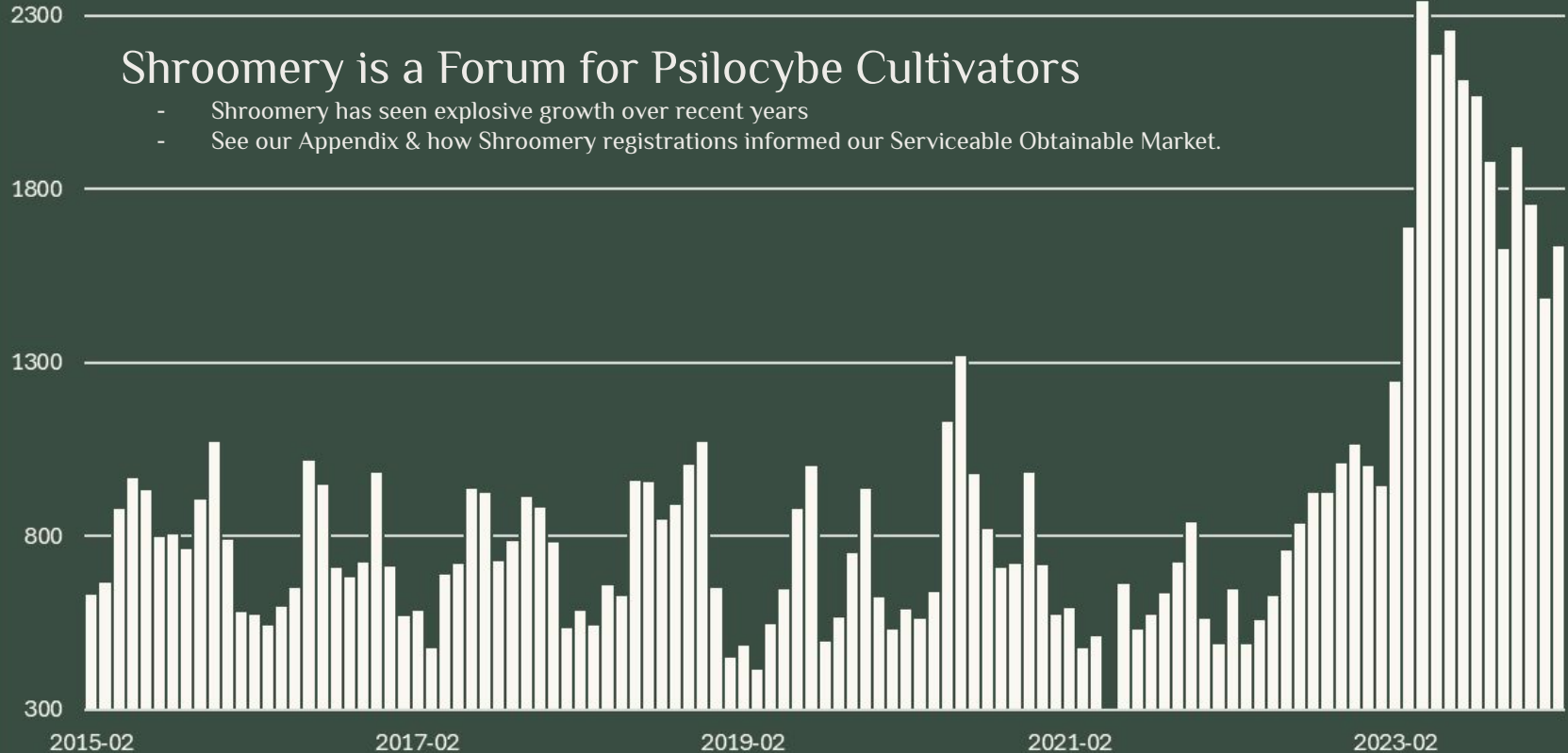
Market Value (In Billions)
Medicinal



New Shroomery Registrations

Shroomery is a Forum for Psilocybe Cultivators

- Shroomery has seen explosive growth over recent years
- See our Appendix & how Shroomery registrations informed our Serviceable Obtainable Market.



How did we estimate our SOM?

Based on survey data, we estimate that 30% of invested mushroom cultivators grow psilocybe mushrooms. Of these, we estimate that 25% are registered on Shroomery, and that the average invested cultivator spends at least \$200 on their setup and materials per year.

Under these assumptions, $\$200 * \text{Relevant registered shroomery users} * (1/0.25) * (1/0.3)$ would yield the approximate yearly spending

We believe that many shroomery users have been conserved sense the 90s, but we decided to only use shroomery users registered in the past 3 years to keep our data as accurate as possible. This yields 40,924 new users. The equation above works out as follows: $200 * 40,924 * 4 * 3.33 = 109,021,536$.

Virtuous Profits



Virtue is rewarded. We aim for sustainability, better than fair wages, and better than fair prices. In today's world of groundbreaking efficiency, we won't make compromises along these lines. We are committed to doing our part in collective compassion, and honoring the gift of life without rapacious consumption. Every purchase you make should disproportionately benefit the world rather than disproportionately damage it. This is possible in the world of the New Dream.

Healing Community



A new awareness is spreading. One that embraces a form of community that has been fractured for generations. Mushrooms can be a tool to examine our frameworks, and heal our unconscious wounds. A new form of connection is central to the future of humanity. By creating opportunities for mindful connection, and for individual healing, we resolve to facilitate positive growth opportunities within our community.

Peace and Purpose



We must remember that each experience can be an opportunity to explore our paths to heightened peace and purpose. The journey of self-actualization is a fundamental pillar in the cathedral of the human imperatives. We aim to attentively sculpt every part of this company to serve the human need for self-actualization on the path to peace and purpose.

This is the framework we adhere to in our exploration of community, customer relationships, and employment.